



# NARCO-SENS<sup>®</sup>

Intelligence at your fingertips...





**M.M.C. International B.V. established in 1992 located in Breda, The Netherlands. M.M.C. is specialized in the production of Narcotics and Precursor Identification-Tests. These Tests are developed in close cooperation with Police and Customs & Excise authorities. The company is certified by TÜV and awarded with the EN ISO 9001-2008 certificate. M.M.C. is registered as a vendor since 1994 with all UN Organizations under No.100346/ Net 0309 and UN Global Market place # 149548. M.M.C. International's laboratory is especially focused on the production and development of narcotic identification products. The products are produced in accordance with requirements set by Police Forces, Customs-&-Excise and Forensic Laboratories. Recently M.M.C. developed a new Drug Testing Device (Electrochemical Bio-sensor) for the detection of drugs. It is a complete new technology.**



### **M.M.C. International B.V.**

Address: Frankenthalerstraat 16-18, 4816 KA Breda, The Netherlands  
Phone: +31-76-5711140  
Email: [Info@mmcinter.com](mailto:Info@mmcinter.com)  
[www.narcoticstests.com](http://www.narcoticstests.com)



## Description

With the Narco-Sens® Narcotics Analyzer, the accuracy and reliability of a narcotics lab is available anywhere you go. Narcotics are easily identified by using the Narco-Sens® developed by M.M.C. International B.V. Narco-Sens® is a device designed for the rapid identification of illicit controlled substances in solids, liquids, saliva and urine, which provides clear and definitive results.





## Typical applications

Airports, Prisons, Police Forces, Hospitals, Customs and other Law Enforcement Authorities.

## Key Benefits

**New technology** - Electrochemical technology

**Easy to use** – Also at the roadside

**Fast & accurate identification** – Results within minutes. Saving time and money

**Single test, multiple narcotics** – Conduct a single analysis to determine 40 different controlled substances

**Broad Analysis Capability** – Solid narcotics or dissolved in liquids. Random screening, drugs in saliva and urine control

**High reliability and consistency** – Much more reliable than the current field tests available in the market today

**Accurate and sensitive** – Within 'ng' range

**No environmental risks/concerns** – No chemicals and safe to use

**Internet connection** – For updates



## How to use the Narco-Sens®

### Sample preparation

The preparation of the sample is one of the most important steps in every analysis. Therefore, it is very important that the instructions below are followed carefully.

#### 1. Solid samples:

Take a buffer solution bottle from the kit and unscrew the cap. Take a spatula from the kit and place a small amount (tip of the spatula) in to the opened buffer solution bottle and stir for 20 seconds. Remove the spatula and close the buffer solution bottle. Shake the buffer solution bottle for 10 seconds. Proceed with the analysis.

#### 2. Liquid samples:

Take a buffer solution bottle from the kit and unscrew the cap. Take a pipette from the kit and use it to draw 0.5 ml of the liquid you want to test in the pipette. Insert the pipette in the opened buffer solution bottle and squeeze out the liquid. Remove the pipette and close the buffer solution bottle. Shake the buffer solution bottle for 10 seconds. Proceed with the analysis.

#### 3. Traces on surfaces:

Take a buffer solution bottle from the kit and unscrew the cap. Take a cotton swab from the kit and (shortly) dip into the buffer solution). Then swab the surface you want to test, with the wetted cotton swab. Insert the cotton swab in the opened buffer solution bottle stir and the solution for 30 seconds with the cotton swab. Remove the cotton swab and close the buffer solution bottle. Shake the buffer solution bottle for 10 seconds. Proceed with the analysis.



#### 4.Urine:

Take a buffer solution bottle from the kit and unscrew the cap. Take a pipette from the kit and use it to draw 0.5 ml of the urine you want to test in the pipette. Insert the pipette in the opened buffer solution bottle and squeeze out the urine sample into the bottle. Remove the pipette and close the buffer solution bottle. Shake the buffer solution bottle for 10 seconds. Proceed with the analysis.

#### 5.Saliva:

Take a special saliva swab from the kit and swab the inside of the suspects mouth. Insert the special saliva swab in the opened collection tube and squeeze out the liquid by pressing the swab (sponge) to the bottom. Remove the special saliva swab and then use a pipette and place 1 drop straight on to the biosensor.

#### 6.Analysis:

Start-up the Narco-Sens<sup>®</sup>, take a sensor from the tube with sensors and place it in the sensor connector of the Narco-Sens<sup>®</sup>. The sensor should be properly inserted. Open the buffer solution bottle unscrew the small tip of the bottle. Place 3 drops of the solution onto the X mark onto the sensor. Please make sure to only add 3 drops of the solution on the sensor, not more and be aware that the rest of the connector stays dry. Press the measurement button on the Narco-Sens<sup>®</sup>. Wait for the measurement to finish. Read the result(s) from the display of the Narco-Sens<sup>®</sup>. The results may also be exported onto a USB stick (supplied).

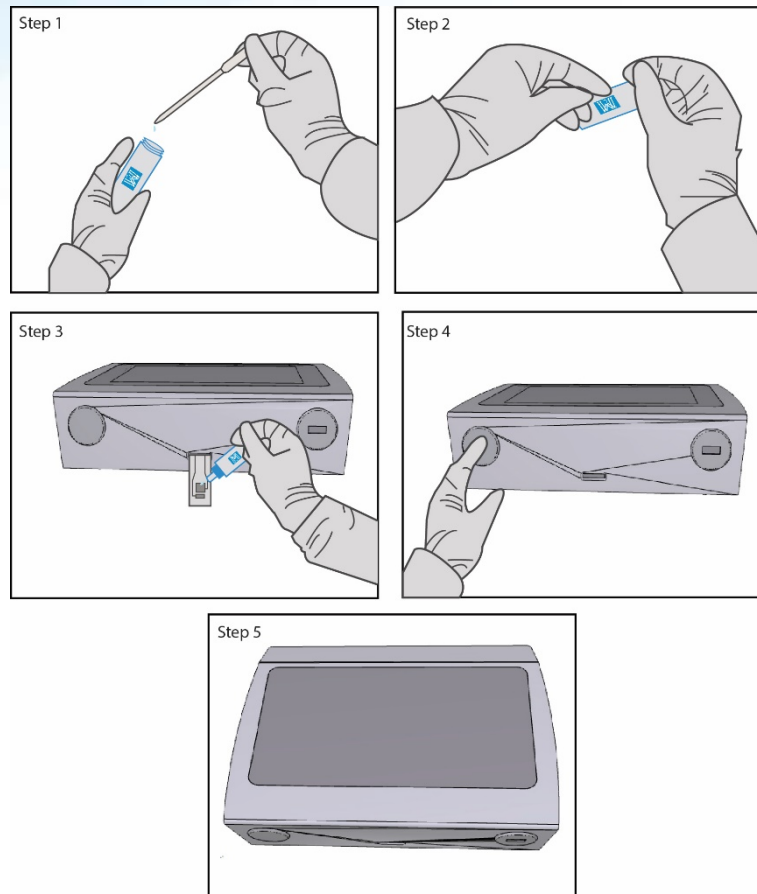




## Quick start guide

This is a brief, simple introductory guide to operate the Narco-Sens®.

These are the steps you should follow:



**Step 1:** Open the buffer solution bottle and insert the spatula/pipette/ cotton swab with a small amount of the suspected sample;

**Step 2:** Stir and remove the spatula/pipette/ cotton swab. Close the bottle and shake it;

**Step 3:** Place the sensor into the Narco-Sens® and add a few drops onto the sensor;

**Step 4:** Press “start measurement” and wait for the results;

**Step 5:** Read the results.

***“You made an excellent choice with the purchase of the Narco-Sens®”***

# DETECTABLE DRUGS



- Substances and substances dissolved in liquids
- Urine and Saliva (Drugs or Metabolites thereof)

## SENSOR SPECIFICATION

### Cocaine sensors

**Type:** Capillary fill  
**Art Code:** 001.C Apt  
**Treatment:** Plasma cleaning |DNA/ Coating 3 layers (Narco Sens Connector A)  
**Detection:** Cocaine /Crack  
**Packing:** 1 box -10 pouches

### General Screening sensors (Saliva)

**Type:** Ceramic  
**Art Code:** 002.S  
**Treatment:** Coating A (Narco Sens Connector B)  
**Application:** Specific screening  
**Detection:** Buprenorphine, Cocaine, Codeine, Ephedrine, Ketamine, Mephedrone, Methadone, Morphine, Heroin, MDMA, Methamphetamine  
**Packing:** Box 75 sensors

### Cannabis THC Sensor (Saliva)

**Type:** Single sensor/ special coatings  
**Art Code:** 003A-C  
**Treatment:** Plasma cleaning | coating / DNA |2 layers (Narco Sens Connector A)  
**Detection:** THC in Saliva  
**Packing:** 1 box -10 pouches

### Urine General Screening sensors

**Art Code:** 005C  
**Treatment:** Special coating | 2 layer (Narco Sens Connector A)  
**Detection:** Drugs and Metabolites thereof in urine  
**Packing:** 1 Tube 25 sensors

### General screening - sensors

**Type:** Capillary fill  
**Art Code:** 002.C  
**Treatment:** Coating A  
**Detection:** Up to 40 different drugs  
**Application:** General screening (Narco Sens Connector A)  
**Packing:** tube 25 sensors



### Packaging in pouches, boxes and tubes

Special sensors:  
 Cocaine/Crack  
 Methamphetamine  
 THC in saliva







## Technical Specifications Narco-Sens®

Dimensions	Weight	Voltage
L: 22 cm/8.66"	1.5kg/3.30lb	100-240v-50/60 Hz- 0.8A
W: 17 cm/6.69"		
H: 9cm/3.54"		

**Language Configurations:** Over 20 different languages

**Data Export Formats:** CSV, PDF

**Computer Administration:** Narco-Sens® Admin

software connected via microUSB to USB

**Warranty:** One (1) year. Optional two (2) or four (4) years

**Warranty Conditions:** On request

**Update:** Updating via internet connection

### Rechargeable LiPo Battery

#### Art NS020 Narco-Sens®

<b>Nominal Voltage :</b>	7,4 V
<b>Charging current :</b>	max. 11A
<b>Discharging current :</b>	max. 220A
<b>Capacity :</b>	5500 mAh
<b>Charging time :</b>	approx. 95 minutes
<b>Operating time :</b>	3-5 Hrs
<b>Battery condition :</b>	Automatic reading
<b>RTC:</b>	Real Time Clock

#### Accessories :

<b>Art ANDS020</b>	Power supply adaptor
Art PNS020	Power cable (200 cm) (Vlep 10000B20)
Art CBCNS020	Car-battery connection cable
Art SENS020	Sensors (10/25/75 pcs)
Art BNS020	Battery





*Distributor:*